

Featuring exceptional musical works for bands requiring flexible instrumentation

EVENING PRAYER

David Shaffer

Grade 2.5

Catalog No: 026-4337-00

Complete Set: \$50.00 - Full Conductor Score: \$6.00

C.L. BARNHOUSE COMPANY

Build-A-Band Series



C.L. BARNHOUSE COMPANY®

Music Publishers • Oskaloosa, IA. 52577

www.barnhouse.com

Build-A-Band Series

Featuring exceptional musical works for bands requiring flexible instrumentation

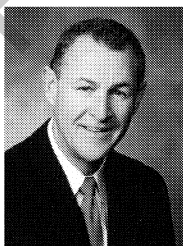
EVENING PRAYER

David Shaffer

Build-A-Band Series Instrumentation

- 1 Full Conductor Score
- 4 C Instruments Part 1Flute, Violin, Guitar
- 4 Bb Instruments Part 1Bb Clarinet, Bb Trumpet, Bb Soprano Sax
- 2 Eb Instruments Part 1Eb Alto Sax, Eb Clarinet
- 3 C Instruments Part 2Flute, Oboe, Violin, Guitar
- 4 Bb Instruments Part 2Bb Clarinet, Bb Trumpet
- 2 Eb Instruments Part 2Eb Alto Sax, Eb Horn
- 2 F Horn Part 2F Horn
- 2 F Horn Part 3F Horn
- 2 Viola Part 3Viola
- 3 Bb Instruments Part 3Bb Tenor Sax, Bb Baritone T.C.,
Bb Trombone T.C.
- 2 Eb Instruments Part 3Eb Alto Clarinet, Eb Horn
- 4 Bass Clef Part 3Trombone, Euphonium B.C., Cello, Bassoon
- 2 Bb Instruments Part 4Bb Bass Clarinet, Bb Baritone T.C.,
Bb Contrabass Clarinet
- 2 Eb Instruments Part 4Eb Baritone Sax, Eb Alto Clarinet,
Eb Contraalto Clarinet, Eb Tuba T.C.
- 4 Bass Clef Part 4Trombone, Euphonium B.C., Cello, Bassoon
- 3 Bass PartString Bass, Electric Bass Guitar, Keyboard
Bass, Trombone, Euphonium B.C.,
Cello, Bassoon
- 2 TubaTuba
- 2 Mallet PercussionVibraphone, Marimba, Orchestra Bells,
Xylophone
- 2 KeyboardsPiano, Electric Piano, Synthesizer, Organ,
Accordion
- 3 PercussionSuspended Cymbal, Wind Chimes
- 1 Timpani

About the Composer



David Shaffer was born in Columbus, Ohio and attended Grove City High School. He holds a Bachelor Degree from The Ohio State University and a Master of Music Degree from Miami University (Ohio.) Mr. Shaffer has taught in the Ohio schools of Hamilton, Northridge, and Wyoming. Mr. Shaffer has been associated with the Miami University Marching Band for 31 years as Graduate Assistant Director (1978-80), Assistant Director (1980-97) and Director (1997 to date.) Under his

direction, the Miami Band has performed twice at the University of Michigan, West Virginia University and the University of Cincinnati. In 2000 and 2005, the Miami Band performed a combined half-time show with The Ohio State University Marching Band. The Miami Band has performed for seven regional Bands of America Contests and annually hosts these events at Miami University in Oxford, Ohio. In 2003 the Miami Band performed as the "Santa Band" in the 77th annual Macy's Thanksgiving Day Parade in New York City.

In addition to his involvement with the Miami University Marching Band, Mr. Shaffer has over 350 compositions and arrangements in print. His compositions have been used at clinics and music festivals around the world and have been placed on contest required-performance lists in the United States, Canada, Europe, Australia, and Asia. Mr. Shaffer has been the recipient of the ASCAP Standard Award in Music Composition for 18 years.

For more information please visit www.davidshaffermusic.com

How to use the Build-A-Band Series

The **Build-A-Band Series** provides educational and enjoyable music for bands with incomplete or unbalanced instrumentation. Written using just four or five parts (plus percussion), these effective arrangements will work with any combination of brass, woodwind, string and percussion instruments as long as you distribute the parts so that each of the five parts is covered.

All of the publications in the **Build-A-Band Series** have been arranged to be playable with any instrumentation as long as each part is used: 1st Part, 2nd Part, 3rd Part, 4th Part, and Bass Part. **(Please note: In some of these arrangements the 4th Part, and the Bass Part are the same, making it possible to play those arrangements with only 4 parts.)**

Also included are various percussion parts which are optional, but will add a great deal to the musical effect. The optional keyboard part can be performed on piano, electric keyboard or any other keyboard instrument, and will help fill out the sound of a small group. Optional guitar, mallet percussion and Timpani parts are also included where appropriate.

Special Notes About Distributing Parts:

The **Build-A-Band Series** should be approached by giving careful consideration to the distribution of parts within your group to attain the best possible blend. You should also feel free to adjust dynamic levels, and to instruct any instruments to adjust octaves at your discretion. In many cases, reducing or adding to the number of players playing a part can greatly help with balance, and make for a much more musical performance. Remember, the flexibility in scoring allows you to be creative to enhance the sound of your group.

The cymbal, snare drum and bass drum parts are all included on one part labeled **Percussion Part**, so that they may be performed by either separate players or by one player on a drum set.

The **Mallet Percussion Part** may be marked for the specific mallet percussion instrument but it can be performed by any mallet percussion instrument, and may be doubled if you have multiple players and instruments. For best results, be creative in assigning which instruments play in the different sections of the arrangement.

The optional **Timpani** part is always playable with 3 timpani.

For repeated sections, in larger ensembles, consider having woodwinds play the first time and brass the second time; or have one player on each part the first time, and all players on the repeat. Another option is having one player on the 1st part as a solo, then having all players on the repeat.

In some of the arrangements which include 16th note runs you will find options to convert some of those runs into 8th notes for players of lesser abilities. This can be done with some or all of the players.

The various instrument parts are written in the octave of the most popular instrument for that part; i.e., C Instrument Part 1 parts are written in the common range for the flute. If you are playing that part on another C instrument such as the oboe, you may have to adjust to a lower octave. In many cases, parts are written in several octaves to help adjust for different instrument ranges.

EVENING PRAYER

by David Shaffer
ASCAP

Moderato with Expression ♩ = 88-92

The score is arranged in a standard orchestral format with the following parts from top to bottom:

- C Treble Part 1
- Bb Treble Part 1
- Eb Treble Part 1
- C Treble Part 2
- Bb Treble Part 2
- Eb Treble Part 2
- F Horn Part 2
- F Horn Part 3
- Viola Part 3
- Low Bb Part 3
- Low Eb Part 3
- Bass Clef Part 3
- Low Bb Part 4
- Low Eb Part 4
- Bass Clef Part 4
- String Bass
- Tuba
- Mallet Perc.
- Keyboard
- Sus. Cym. with Soft Mallets
- Cymbals
- Wind Chimes
- Timpani

Dynamic markings include *mf*, *f*, *rit.....*, *fp*, *pp*, and *p*. The score includes a large watermark: "Not Valid for Performance".

a tempo

C Part 1 *mf a tempo*

Bb Part 1 *mf a tempo*

Eb Part 1 *mf a tempo*

C Part 2 *mp a tempo*

Bb Part 2 *mp a tempo*

Eb Part 2 *mp a tempo*

F.H. Part 2 *mp a tempo*

F.H. Part 3 *mf a tempo*

Viola *mf a tempo*

Bb Part 3 *mf a tempo*

Eb Part 3 *mf a tempo*

BC Part 3 *mf a tempo*

Bb Part 4 *mp a tempo*

Eb Part 4 *mp a tempo*

BC Part 4 *mp a tempo*

Bass *mp a tempo*

Tuba *mp a tempo*

Mallets *mf a tempo*

Keyboards *mp*

Sus. Cym. *a tempo*

Wind Ch. *a tempo*

Timp. *a tempo*

accel.....

rit.....

15

WW Only If Possible
a tempo

5

C Part 1

Bb Part 1

Eb Part 1

C Part 2

Bb Part 2

Eb Part 2

F.H. Part 2

F.H. Part 3

Viola

Bb Part 3

Eb Part 3

BC Part 3

Bb Part 4

Eb Part 4

BC Part 4

Bass

Tuba

Mallets

Keyboards

Sus. Cym.

Wind Ch.

Timp.

f

f

f

mp

mp

mp

mp

mp

mp

mp

mp

mp

mp

mp

mp

mp

a tempo

a tempo

mp

accel.....

rit.....

accel.....

rit.....

accel.....

rit.....

Wind Chimes

a tempo

Musical score for page 6, measures 16-20. The score includes parts for C, Bb, Eb, F.H., Viola, BC, Bass, Tuba, Mallets, Keyboards, Sus. Cym., Wind Ch., and Timp. Dynamics include mf, mp, and f. The score is marked 'All Play' in several measures. A watermark 'Not Valid for Performance' is visible across the score.

WW Only If Possible

C Part 1

Bb Part 1

Eb Part 1

C Part 2

Bb Part 2

Eb Part 2

F.H. Part 2

F.H. Part 3

Viola

Bb Part 3

Eb Part 3

BC Part 3

Bb Part 4

Eb Part 4

BC Part 4

Bass

Tuba

Mallets

Keyboards

Sus. Cym.

Wind Ch.

Timp.

mf

f

WW Only If Possible

div.

mp

a2

This musical score page, numbered 8, contains measures 26 through 29. It is a full orchestration for a concert band or symphonic band. The parts include:

- Woodwinds:** C Part 1 & 2, Bb Part 1 & 2, Eb Part 1 & 2, F.H. Part 2 & 3, Viola, Bb Part 3, Eb Part 3, BC Part 3, Bb Part 4, Eb Part 4, BC Part 4.
- Low Brass:** Bass, Tuba.
- Other:** Mallets, Keyboards, Suspended Cymbal (Sus. Cym.), Wind Chimes (Wind Ch.), and Timpani (Timp.).

Key musical elements include a *rit.* (ritardando) marking at the start of measure 27, and the instruction *All Play* appearing frequently in measures 27 and 28. Dynamics such as *p* (piano) and *f* (forte) are also present. The score uses various note values, including quarter notes, half notes, and whole notes, with some notes beamed together. A large diagonal watermark reading "Not valid for performance" is superimposed over the score.

C Part 1
f a tempo
ff

Bb Part 1
f a tempo
ff

Eb Part 1
f a tempo
ff

C Part 2
f a tempo
ff

Bb Part 2
f a tempo
ff

Eb Part 2
f a tempo
ff

F.H. Part 2
f a tempo
ff

F.H. Part 3
mf a tempo
ff

Viola
mf a tempo
ff

Bb Part 3
mf a tempo
ff

Eb Part 3
mf a tempo
ff

BC Part 3
mf a tempo
ff

Bb Part 4
mf a tempo
ff

Eb Part 4
mf a tempo
ff

BC Part 4
mf a tempo
ff

Bass
mf a tempo
ff

Tuba
mf a tempo
ff

Mallets
a tempo

Keyboards
mf a tempo
ff

Sus. Cym.
a tempo

Wind Ch.
a tempo

Timp.
mf a tempo

